

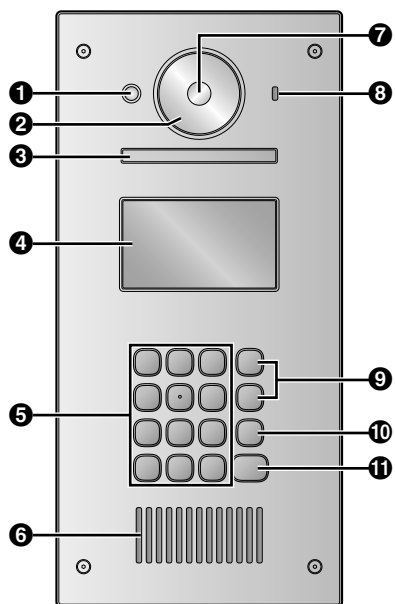
# Quick Reference Guide for VL-V900

This document explains the basic operations of the VL-V900. For further details, refer to the operating instructions of the VL-V900 on the web.

<http://panasonic.net/pcc/support/intercom/v900>

## Controls

### Lobby Station



#### ❶ Heat sensor

Turns on the display when a visitor is detected.

#### ❷ Lens cover

#### ❸ Light

Illuminates subjects in dark environments.

#### ❹ Display

#### ❺ Keypad

#### ❻ Speaker

#### ❼ Camera lens

#### ❽ Microphone

#### ❾ Search buttons (▲ and ▼)

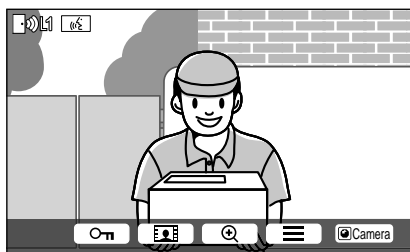
Used to select items shown on the display, adjust settings, etc.

#### ❿ Cancel button (X)

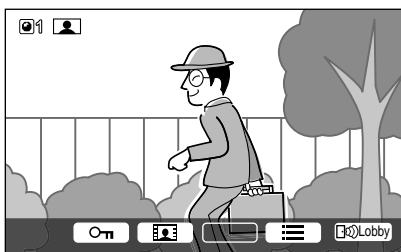
#### ⓫ Call button (△)

## Image viewing screen of the main monitor

### Image from lobby station



### Image from camera

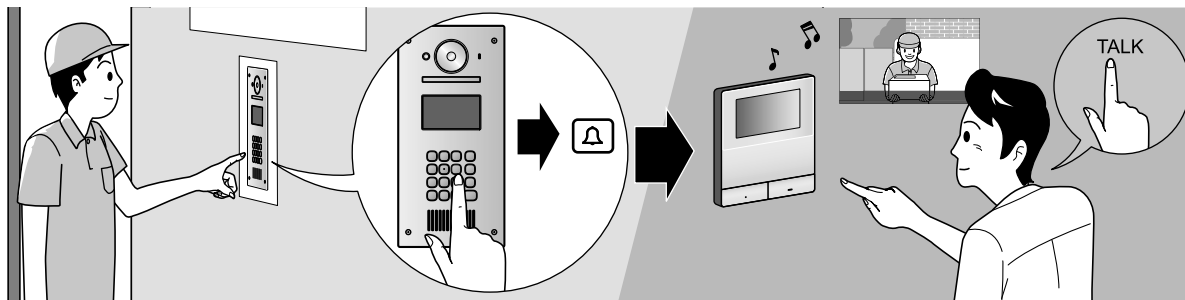


## Status icons

- Indicates which lobby station is calling, monitoring, or talking. ("1" indicates the device number)
- Indicates which camera is monitoring. ("1" indicates the device number)
- Indicates the doorphone is calling, monitoring, or talking.
- Indicates the other person (lobby station or PBX extension) is calling when monitoring or talking with the doorphone.



## Basic operation



Enter the room number with the keypad → [🔔].

When the ringer tone is heard, press [TALK].

- Confirm the caller before answering.

## Other operation

### At the lobby station

#### Searching by first letter of the name

- 1 Press [✳] → use the keypad to enter the first letter of the resident's name.
- 2 Press [▲] or [▼] to search for the desired name.
- 3 Press [🔔] to call.

#### Opening the door by entering an unlock code

- 1 Press [#] → enter the 4-digit unlock code.
  - For information about the unlock code, please contact your building manager.
- 2 Press [🔔] to unlock.

#### Switching the image displayed on the main monitor

While talking to the main monitor, press [#] to switch the image displayed on the main monitor from the lobby station to the camera. To return to the lobby image, press [✳].

### At the main monitor

#### Monitoring the lobby station or camera image

- 1 Press [👤] → select the desired destination → [OK].
  - If a camera is connected to the lobby station, you can alternate monitoring between the lobby station and camera by pressing [📷Camera] or [🏠Lobby].

#### Opening the door

You can open the lobby door while talking or monitoring the lobby station image. Press [🚪] to open the door.

#### Calling the PBX extension

- 1 Press [☎TALK] → select the desired destination → [OK].

#### Please note the following system conditions and limitations.

- Only one call or monitoring session can be handled at a time.
  - Low priority: Monitoring
  - Medium priority: General calls (lobby station to main monitor, main monitor to PBX extension, etc.)
  - High priority: Emergency calls
- All calls and monitoring sessions are disconnected after the pre-programmed "timeout" time elapses.
- Following features are not available for the lobby station:
  - Zoom position settings
  - Wide/Zoom settings
  - Doorphone connection settings
- In order to perform the above operations, optional devices and configuration for those devices are required. Contact your building manager for more information.