

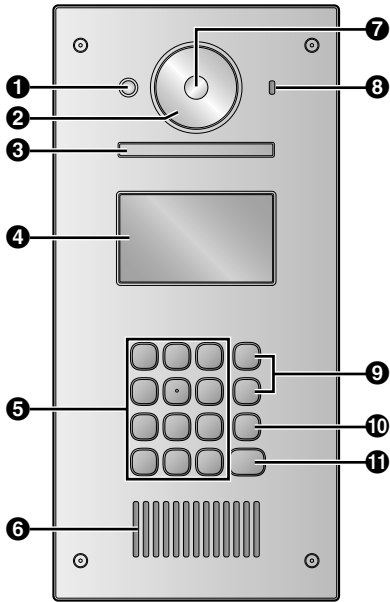
Quick Reference Guide for VL-V900

This document explains the basic operations of the VL-V900. For further details, refer to the operating instructions of the VL-V900 on the web.

<http://panasonic.net/pcc/support/intercom/v900>

Controls

Lobby Station



1 Heat sensor

Turns on the display when a visitor is detected.

2 Lens cover

3 Light

Illuminates subjects in dark environments.

4 Display

5 Keypad

6 Speaker

7 Camera lens

8 Microphone

9 Search buttons (▲ and ▼)

Used to select items shown on the display, adjust settings, etc.

10 Cancel button (X)

11 Call button (△)

Image viewing screen of the main monitor station

Image from lobby station

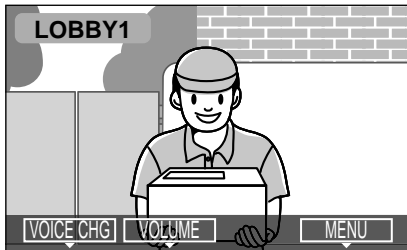
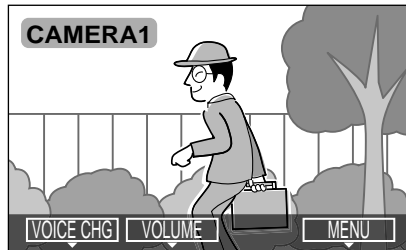


Image from camera



Status icons

LOBBY1 Indicates which lobby station is calling, monitoring, or talking. ("1" indicates the device number)

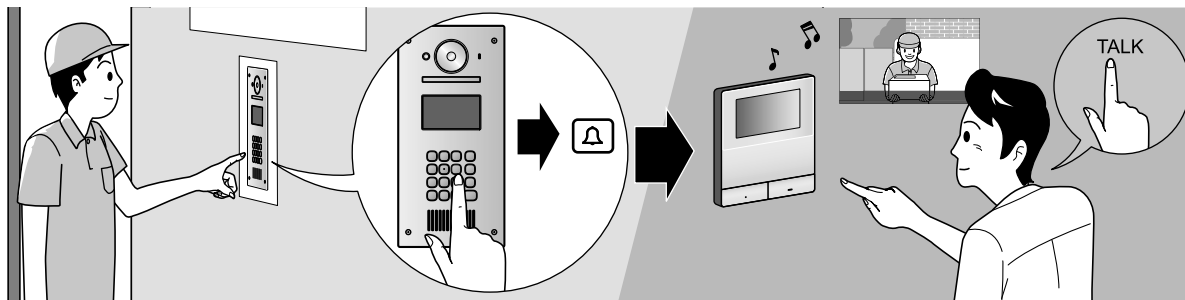
CAMERA1 Indicates which camera is monitoring. ("1" indicates the device number)

DOOR Indicates the doorphone is calling, monitoring, or talking.

OTHER Indicates the other person (lobby station or PBX extension) is calling when monitoring or talking with another device.



Basic operation



Enter the room number with the keypad → [🔔].

When the ringer tone is heard, press [TALK].

- Confirm the caller before answering.

Other operation

At the lobby station

Searching by first letter of the name

- 1 Press [✳] → use the keypad to enter the first letter of the resident's name.
- 2 Press [▲] or [▼] to search for the desired name.
- 3 Press [🔔] to call.

Opening the door by entering an unlock code

- 1 Press [#] → enter the 4-digit unlock code.
 - For information about unlock code, please contact your building manager.
- 2 Press [🔔] to unlock.

Switching the image displayed on the main monitor station

While talking to the main monitor station, press [#] to switch the image displayed on the main monitor station from the lobby station to the camera. To return to the lobby image, press [✳].

At the main monitor station

Monitoring the lobby station or camera image

- 1 Press [MONITOR].
- 2 Press [VOLUME] (▼) or [PAGE] (▲) to select the desired destination → [MENU] (OK).
 - If a camera is connected to the lobby station, you can alternate monitoring between the lobby station and camera by pressing [MONITOR].

Opening the door

You can open the lobby door while talking or monitoring the lobby station image. Press [DOOR KEY] to open the door.

Calling the PBX extension

- 1 Press [TALK].
- 2 Press [VOLUME] (▼) or [PAGE] (▲) to select the desired destination → [MENU] (OK).

Please note the following system conditions and limitations.

- Only one call or monitoring session can be handled at a time.
 - Low priority: Monitoring
 - Medium priority: General calls (lobby station to main monitor station, main monitor station to PBX extension, etc.)
 - High priority: Emergency calls (Available for certain system configurations only. Not available for VL-MW251.)
- All calls and monitoring sessions are disconnected after the pre-programmed "timeout" time elapses.
- Following features are not available for the lobby station:
 - Door station connection settings
 - Door key settings
 - Automatic illumination settings
- In order to perform the above operations, optional devices and configuration for those devices are required. Contact your building manager for more information.